

VISTA V2

Simple, Powerful, Visual



Vista Lighting & Media
Control Applications

Volume 5

VISTA V2

Simple, Powerful, Visual

Lighting and Media Control by **JANDS**



facebook.com/jandslighting



twitter.com/jandslighting

Phone +44 (0)1494 446000

TOURING • EVENTS • SHOWS • VENUES • CORPORATE • WORSHIP • EDUCATION

The Platform for the Creative Mind

The award-winning Jands Vista lighting and media control platform has been adopted by leading designers, companies and venues all over the world on a wide range of shows.

Here are just a few of the many productions that have used the Vista system.



To download the FREE Vista v2 demo software version, please scan the QR code or visit www.ac-et.com/jands

VISTA

Photos (left to right): 1 ©Louise Stokland; 2, 3, 5, 11, 15, 17 ©Roe Sinclair; 4 ©Steve Lee; 6 ©Canvas Bag Media; 7 ©Adam Elmaks; 8 @www.stanbouman.com / The Light Connection; 9, 10 ©Thomas Juul; 12 @Alford Media; 13 ©Steve Jennings; 14 ©Troy Constable; 16 ©Alex Griffiths; 18 ©Digital Carriage-2013

VISTA V2

Simple, Powerful, Visual

Leading Edge Show Control, Whatever Your Production



Visit www.jands.com/vista
for more information



Contents

Vista Control System & v2 Software



6, 7

Vista Hardware Range



8, 9

Vista D1 Playback Processor



10

The X Factor, Kazakhstan



11

Vista User: Rob Sinclair



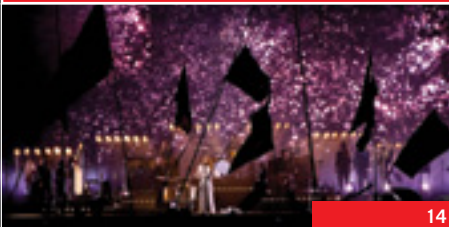
12

Peter Gabriel Tour, Europe



13

Florence + The Machine, UK



14

Bring Me the Horizon, UK



15

Alton Towers Resort, UK



16

Vista User: Robb Jibson



17, 18, 19

Gwinnett Church, USA



22

Raymond Gubbay Christmas Spectacular, UK



23

WaterTower Theatre, USA



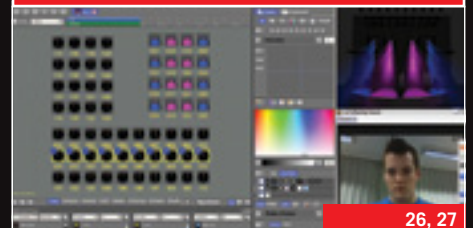
24

Dierks Bentley's Riser Tour, USA



25

Vista Training & Further Info



26, 27

Jands Vista Control System

The award-winning Jands Vista lighting and media control system offers the next generation Vista v2 software in a wide range of hardware options to suit many budgets, styles and scales of shows.

Vista v2 was designed from the ground up to allow all levels of user to get the most from whatever mix of technology they have available, whether dimmers, moving lights, LED or media. Offering the simplicity to work fast, with the power to control the finest details, Vista v2 lets everyone focus on creating a great looking show rather than on programming a desk.

Flexibility

Pick the most appropriate hardware option for the scale and style of show, while keeping an identical software interface. The same simple, powerful and visual software is shared across the whole family, allowing the flexibility to move easily around the hardware options as needs and budgets change.

Vista control surfaces offer the freedom to choose the most appropriate channel option, and to upgrade as and when required.

Intuitiveness

React to changes quickly with the Vista software's simple, flexible and incredibly intuitive interface. Allowing the user to create their show visually, it is both fast and easy to get the most from today's mix of dimmers, moving lights, LEDs and media servers.

Adaptability

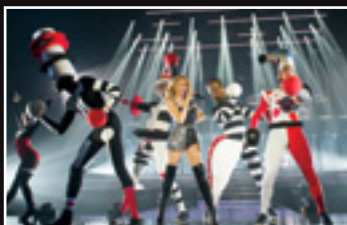
Thanks to Vista v2's powerful second generation generic fixture model, users have the freedom to quickly adapt their show to use different fixture types in seconds. Simply change the type in the patch and the programming will automatically update.

Innovation

Vista v2's innovative next generation timeline environment gives a complete and accurate picture of even complex changes to quickly get the detail right on the first attempt.

Choices

From PC and Mac based control surfaces, to stand-alone Linux based consoles, 5 to 80 separate playbacks per page, simply choose the right Vista hardware solution and number of channels for your needs and budget...



Flexible hardware; Powerful, Simple, Visual software; unbelievably easy to use; find out more today at www.jands.com/vista

Vista v2 Software

Jands Vista v2 is a true next generation lighting and media control software designed to meet the needs of today's, and tomorrow's, shows and technology.

	Simple	Powerful	Visual
LED	 <p>Simple & consistent control of different LED systems, (e.g. RGB, RGBA, RGBW) together.</p>	 <p>Run effects & media across LED matrices directly from the console.</p>	 <p>Control the new generation of multi-element fixtures as they were designed.</p>
Media	 <p>Make media servers as easy to control as everything else...</p>	 <p>Fast timeline editing makes for precise & accurate media control...</p>	 <p>Choose media from images rather than numbers...</p>
Fixtures	 <p>Easy & consistent control of different fixtures together...</p>	 <p>Create precise effects using different parameters & fixture types...</p>	 <p>Graphical selections make it easy to make creative decisions fast...</p>
Storing	 <p>Store what you see in a single action, setting times if you choose...</p>	 <p>Store right down to a single parameter of a single fixture...</p>	 <p>Set detailed cue times & clearly see how the parts fit together...</p>

Download your free software demo version at www.jands.com/support

Vista Hardware Range -

Control Surfaces

The Vista control surface range offers portability, flexibility, and freedom by connecting to the Vista v2 software running on a Mac natively or on a PC.

Each control surface can be customised with a variety of DMX channel options to suit the needs of the user, while keeping the freedom to upgrade to the next level as and when required.

You can also combine two stackable DMX channel dongles together to expand your Jands Vista

system by harnessing the power of the combined channel count. All control surfaces can act as backups or additional wings to other Vista consoles.



UD512 USB to DMX Interface

- DMX interface from a USB port
- Supported by Vista application on Windows or Mac
- Single USB connection for power and communication
- Extra DMX port from any Vista console or control surface

The most compact and portable DMX interface in the Vista family. The UD512 fits in a laptop bag and provides DMX control even when you never knew you were going to need it.



Vista M1 (512 or 1024 DMX channels as standard)

- 5 fader playbacks (gives up to 15 playbacks per page)
- 2 DMX ports
- Single USB connection for power and communication
- Grandmaster, modifiers, and page buttons

Ultra compact and portable, the M1 can be used as a cost effective controller for a school, a small event, a breakout room, or to add more faders to any of the other consoles in the Vista family.

Vista S1 (4096 DMX channels as standard)

- 5 fader playbacks (gives up to 15 playbacks per page)
- 3 encoders with associated LCD display
- 2 DMX ports
- Timecode In
- 6 Softkeys
- Grandmaster, modifiers, and page buttons

Compact and portable, the S1 offers a deceptively powerful console in such a flexible package which makes it ideal for a designer themselves, events, AV companies, larger schools, club touring, and festivals.



Solutions To Fit Every Budget



Vista S3 (4096 DMX channels as standard)

- 20 playbacks, 10 with faders (gives up to 50 playbacks per page)
- 3 encoders with associated LCD display
- 4 DMX ports
- Timecode In
- 6 Softkeys
- Grandmaster, modifiers, and page buttons

The S3 offers a powerful console with a small footprint, making it ideal for a designer themselves, mid-sized events, AV companies, larger schools, festivals, and mid-scale touring.

Consoles

The Vista console range offers the powerful Vista v2 software in a self contained hardware package. The accuracy and simplicity of the interface makes sense of even the most challenging shows, so you can concentrate on lighting rather than on programming.

All consoles can act as backups to other Vista consoles.



Vista I3 (4096 DMX channels as standard)

- 20 playbacks, 10 with faders (gives up to 50 playbacks per page)
- 4 DMX ports
- Ethernet connector for ArtNet or Pathport output, and console communication
- Grandmaster, modifiers, and page buttons
- Choice of DMX channels
- Supports 2 Elo touchscreens, or Wacom graphics tablets

The I3 offers a powerful console with a small footprint, making it ideal for touring, theatre, lighting companies, AV companies, large schools, venues or rental.

Vista L5 (4096 or 8192 DMX channels as standard)

- Massive 21" High Definition Wacom display
- 25 playbacks, 20 with faders (giving up to 70 playbacks per page)
- 4 DMX ports and 2 Ethernet connectors
- Grandmaster, modifiers, and page buttons

The flagship Vista L5's 21 inch HD display is designed for dealing with the ever increasing use of both media and LEDs. The L5 is ideal for touring, theatre, rental and production lighting / AV companies and venues.



Vista D1 Playback Processor



The Jands Vista D1 provides additional playback processing and channel capacity for the entire range of Vista control consoles. When connected to a host Vista console, each D1 expands the playback processing / channel count by 8192 channels (sixteen DMX universes). In addition, each D1 provides eight physical DMX outputs for connection to the lighting fixtures. Multiple D1 units can be connected to one Vista control console.

The D1 incorporates a high performance Intel processor, large RAM capacity, solid state drive, and separate Ethernet connections for console data and fixture data to maximise performance and minimise latency.

The Vista D1 is suitable for use with all Vista control consoles running the appropriate version software. This includes both Linux consoles and consoles based on PCs or Macs, with or without USB consoles connected. D1 units can also be used in a tracking backup system, with the D1 control source following the master should a change-over occur. Additionally D1 failure can be accommodated on another backup D1, should full redundancy be required.

The Vista D1 is built in a rugged steel case suitable for mounting in a standard 19-inch equipment rack. A small touch screen graphics display is used for basic configuration of the unit, while a number of dedicated front panel indicators show the D1 status at a glance.

For a large show, simply add channels with a D1...



Added some lights and need to rent a few more channels...



Need full on redundancy...

Active System

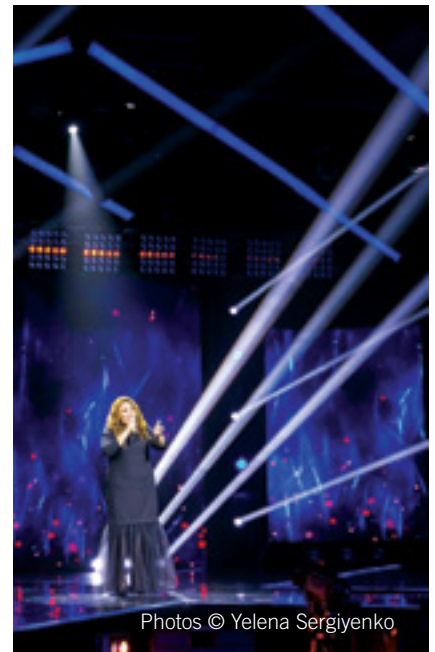


Tracking Backup



The latest series of Kazakhstan's popular TV show, "The X Factor", shone with a large rig and inspired visuals, controlled from a Jands Vista S3 lighting and media console.

The X Factor, Kazakhstan



Photos © Yelena Sergiyenko

Hugely successful and syndicated around the world, Kazakhstan's version of The X Factor music talent show is broadcast on the Perviy Kanal Exraziya channel.

"The brief was very simple: a modern, spectacular show," says Lighting Designer, and Director of Photography, Dimitry Karabetskiy, a long-time Vista user who works on some of Kazakhstan's largest TV shows. "My translation of this was even easier - to specify lighting fixtures that were not only for 'moving and shining', but to create 'lighting art'. I wanted my design to underline the brightest moments in songs and create the right mood for the artist."

Dimitry chose the Jands Vista S3

combined with three M1 wings to control the large lighting rig. In addition, Dimitry used Vista to control a media server connecting various LED screens, which resulted in complete control of the show's visual elements from a single console.

Designed to cope with the ever-changing demands of modern shows, the powerful Vista system makes controlling a mix of lighting, LED and media server technology both fast and unbelievably simple.

"The Vista enables me to be creative - I don't want to spend ages pressing keys, I want to create!" Dimitry continues. "For me it offers lightning fast programming, unlimited possibilities with effects, and most

importantly reliability for use in big live productions."

"Everything about Vista is realised simply and clearly. It's effortless to program effects, and editing in the timeline is like a fairy tale! These features result in more time for rehearsals and programming, which is important as there are never enough hours in the day!"

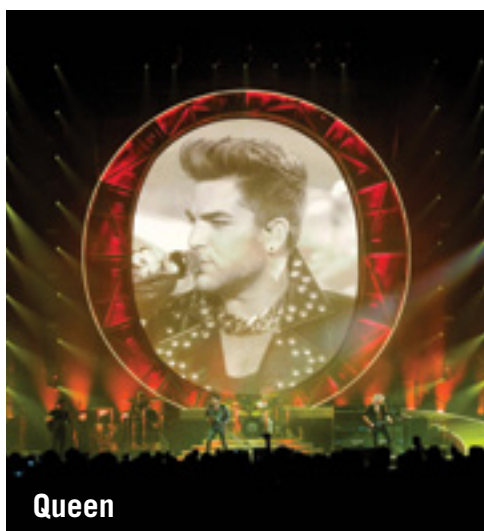




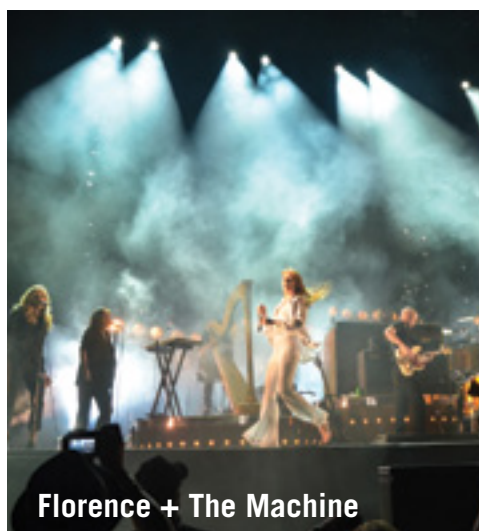
Vista User Profile: Rob Sinclair Award-Winning Lighting Designer

Rob has specified Vista control extensively on his shows for the past few years. These include Florence + The Machine, Hurts, Adele, Kylie Minogue, Queen + Adam Lambert, Peter Gabriel, Pet Shop Boys, and many more artists.

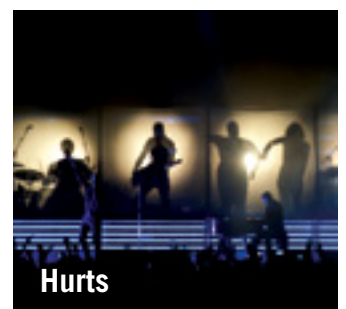
For Rob, the Jands Vista platform is the only choice. “The Vista helps me by being powerful yet simple, enabling me to get the artist’s and my ideas from our heads and onto the stage. It’s quick to achieve the simple, yet I can also delve deeper and deliver complex programming quickly. The added bonus is the support. It’s comforting to know that there are always people on my side if ever I have a problem, regardless of where I am in the world.”



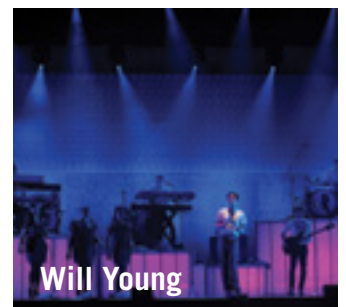
Queen



Florence + The Machine



Hurts



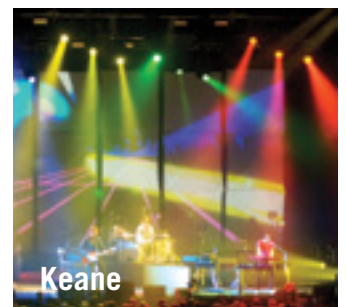
Will Young



Kylie Minogue



Adele



Keane

Rob Sinclair photo © Steve Moles;
Kylie Minogue photo © Ken McKay;
Other photos © Rob Sinclair

Renowned Lighting Designer, Rob Sinclair has used a Jands Vista lighting and media control console to deliver an atmospheric visual feast for the latest Peter Gabriel "Back to Front" world tour.



Celebrating the 25th anniversary of hit album "So", the tour spans Peter's illustrious career, including a performance of the album in its entirety and features the original "So live" 1987 band lineup. It is described by the innovative artist himself as a "three course show".

In response, Rob's inventive and dynamic lighting kicks off with the house lights up, then slowly slips into performance mode. Rob chose to use Jands' Vista control platform for a number of reasons: "Firstly, it's fast and instinctive to use. At The O2 arena, London I needed to modify every cue for filming and it only took me a

Peter Gabriel Tour, Europe



couple of hours!" Rob says it feels like it's actually an extension of his brain.

Secondly, the latest Vista v2 software release has Rob impressed: "Some of the time I need to do relatively simple programming and the console makes that easy and frictionless. However, sometimes I need to set up more complex sequences. This is where the console really comes into its own, allowing me to burrow deep into the detail of a cue."

"Thirdly, I use the cloning, copy and pasting features regularly. I can change an entire rig, and by adjusting a few presets I know my show will run as I expect."

Rob has used the Jands Vista platform since 2005. "The console operates visually, so I don't need to do any unnecessary maths," he explains. "The Timeline shows me exactly what I've recorded and allows me to identify

where something needs adjusting. The ability to copy and paste events between completely different types of fixtures in different songs is nothing short of miraculous!"

Rob comments. "I love that the show file is constantly evolving. Every small change, every slight move forward gets me closer to the never attainable dream of perfection."

The premise of the design began with an idea to re-use and re-engineer the camera style boom arms from the original "So live" tour. The design featured over 100 Martin Mac Auras, Mac 2k washes and Clay Paky QWO 800s.

The European leg of the "Back to Front" world tour commenced in September, culminating with a series of UK dates which were recorded for a future DVD release.

Florence + The Machine Headlines Glastonbury Festival, UK



Lighting Designer,
Rob Sinclair and
Programmer Louisa
Smurthwaite used a
Jands Vista L5 console
to deliver a memorable
performance for
Florence + The
Machine's triumphant
Friday night headlining
slot on the Pyramid
Stage at Glastonbury
Festival.

Photos © thefifthstate.co.uk

One of the most famous and celebrated music festivals in the world, Glastonbury has provided a global stage for some of the world's leading rock and popular music artists - with many giving career-defining performances on the iconic Pyramid Stage.

When Florence + The Machine were promoted to top of the bill just one week before the show, after an injury to Dave Grohl forced the Foo Fighters to pull out, Rob and Louisa were faced with the challenge of completely re-designing the show lighting for the current "How Big 2015" international tour, to incorporate the production values of a headliner slot - with only two extra days of production rehearsals available.

Although a considerable amount of work to reprogram the show, Louisa knew that Vista's Generic Fixture Model and FX Engine would make light work of this task.

She commented: "There was plenty of fixture swapping required to reprogram the touring show for the Pyramid Stage. The thing that I love about Vista is that once you ask it to swap one fixture to become another, it simply works. I don't have to go in and update additional elements or manually link features from one fixture to the next - I am instantly ready to continue my work."

Having only used the L5 on one previous tour, for Kylie Minogue,

Louisa was further impressed with its overall ease of use and reliability.

She commented: "I have used all of the consoles within the Jands Vista family over the years and I find them to be incredibly reliable and robust, but I am always impressed on just how far you can push the L5, and it simply continues to deliver on performance."



Lighting Designer, Ben Inskip selected Jands' flagship Vista L5 console to control his technically ambitious design for British metalcore band, Bring Me the Horizon, who recently played London's iconic SSE Arena, Wembley.

Bring Me the Horizon: Wembley Arena, UK



Ben has had success for some time touring on Bring Me the Horizon's smaller shows with a portable Vista control solution, consisting of S1 & M1 wings, but selected the Jands Vista L5 for this particular arena performance, which was the band's biggest show to date.

In addition to having plenty of computing power to deal with the demands of today's largest shows, the Vista L5's sleek design is dominated by a stunning 21 inch High Definition Wacom tablet that provides a crisp, detailed image of the same Vista v2 software that is used across the entire

Vista console family.

"Having used an L5 on some previous shows, I really got to experience how quickly and comfortably you can program with it," says Ben. "I chose it for Wembley because I knew the bigger screen and extra faders would be really useful when dealing with a show of this scale."

Ben continues, "I love that Vista provides the ability to build quick but complex looks. Vista's unique timeline feature allows me to program precise timings with ease. I found myself creating hundreds of events for even

the smallest little inflections in songs, simply because Vista allowed me the time and creative freedom to do so. Vista has definitely made a difference to the final look of the show."

In addition to playing the show back on the L5, Ben was able to do most of his pre-programming offline on smaller Vista desks. "Hopping between Jands' Vista consoles couldn't be easier... all of this is made even better by the fact that the software runs on a Mac - having access to my show files literally anywhere at any time means I can be editing show files long before I set foot near a console."



Alton Towers Resort: Ultimate Fireworks Spectacular, UK



The Jands Vista lighting and media control console again proved its flexibility and power when it provided control for this year's "Ultimate Fireworks Spectacular" event at popular UK Theme Park, Alton Towers Resort.



Celebrating the end of the Theme Park season, the annual closing event is no ordinary show - telling a unique story with an amazing amount of fireworks, lasers, ear-popping music and special effects.

Alton Towers Resort specified the Jands Vista control system to provide lighting and media control for the event, for the 5th consecutive year running.

Simon Horsley, Alton Towers Resort's Technical Manager comments: "One of the reasons we chose Vista is because for a time-coded show, it's so easy to set up."

He continues: "It's effortless to create a physical layout on-screen and see all of the fixtures in your show. With Vista's visual interface, I was able to pre-plot

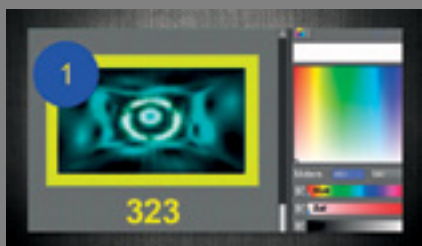
the entire show using the offline editor - leaving only the position elements needing to be programmed on-site. This saved a massive amount of time!"

Summarising the experience, Simon comments: "After using the Vista for several of our previous fireworks shows, and for other events, it was the obvious choice. Once again, the technical team at Alton Towers Resort are really delighted with the outcome of the show using Vista - which helped to make the event another huge success."

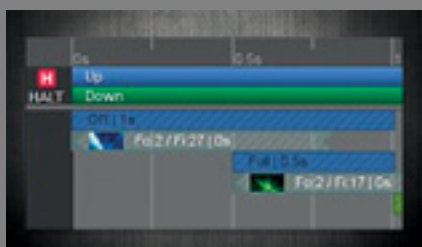


Vista Media Control

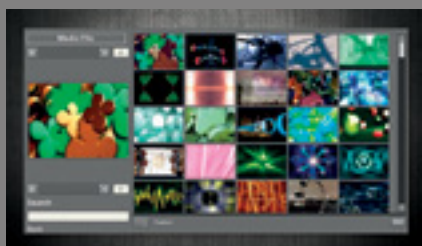
The Vista system's powerful, flexible v2 software makes media servers as easy to control as lighting.



Visual feedback...



Fast timeline editing makes for precise & accurate media control...



Choose media from images rather than numbers...



Vista User Profile: Lighting Designer Robb Jibson

Principal Designer Robb Jibson of So Midwest, Inc. has chosen the Vista system to provide media control for North American tours by high-profile artists including Incubus, Deftones and Fall Out Boy.

Deftones Tour, North America



For Grammy award-winning band Deftones, Robb used the Vista L5 to control the tour's own custom grid package, which included a number of LED battens providing visual effects alongside lighting effects from moving heads, spotlights and strobes.

With extremely limited truck space, Robb required a control system

that could facilitate media server type effects, without the use of a dedicated media server.

By utilising Vista's powerful Smart Effects engine in combination with the sophisticated Matrix feature, Robb was able to achieve "stunning" pixel-mapping effects using the Vista's onboard features alone - saving space, time and money.

Incubus Tour, North America



Photos © Steve Jennings

Robb used the Vista L5 console to provide lighting and media control for multi-platinum selling rockers, Incubus. Sharing the headline of the North American tour were Grammy award-winning rap-rock outfit, Linkin Park.



With complex timing changes, intricate programming, an extensive lighting system and multiple video content and input layers, Robb's design required a fast workflow, which the Vista's simple, powerful interface helped him achieve.

Timing is central to Robb's designs, and he really appreciates the ability

to fine tune each detail quickly and accurately using the Vista's timeline.

"The Vista makes it so easy to add complex timing and build intricate programming very quickly. With all the power you need and virtually unlimited possibilities - what more do you need?" Robb enthuses.

A Jands Vista S3 console and two Jands D1 Playback Processors provided lighting and media control for American rockers, Fall Out Boy's recent international tour.



Fall Out Boy: International Tour



Photos © Jack Edinger

The Jands Vista D1 expands the DMX processing capabilities of the entire Vista range and connects via Ethernet to any Vista system - providing an additional 8192 channels (16 DMX universes) per unit.

"There were a total of 31 DMX universes on the tour," says Robb.

"Vista controlled all the lighting fixtures and some media server elements. The D1 processors were needed due to the large parameter counts, and I have to say they performed amazingly well. They simply sat on the network and

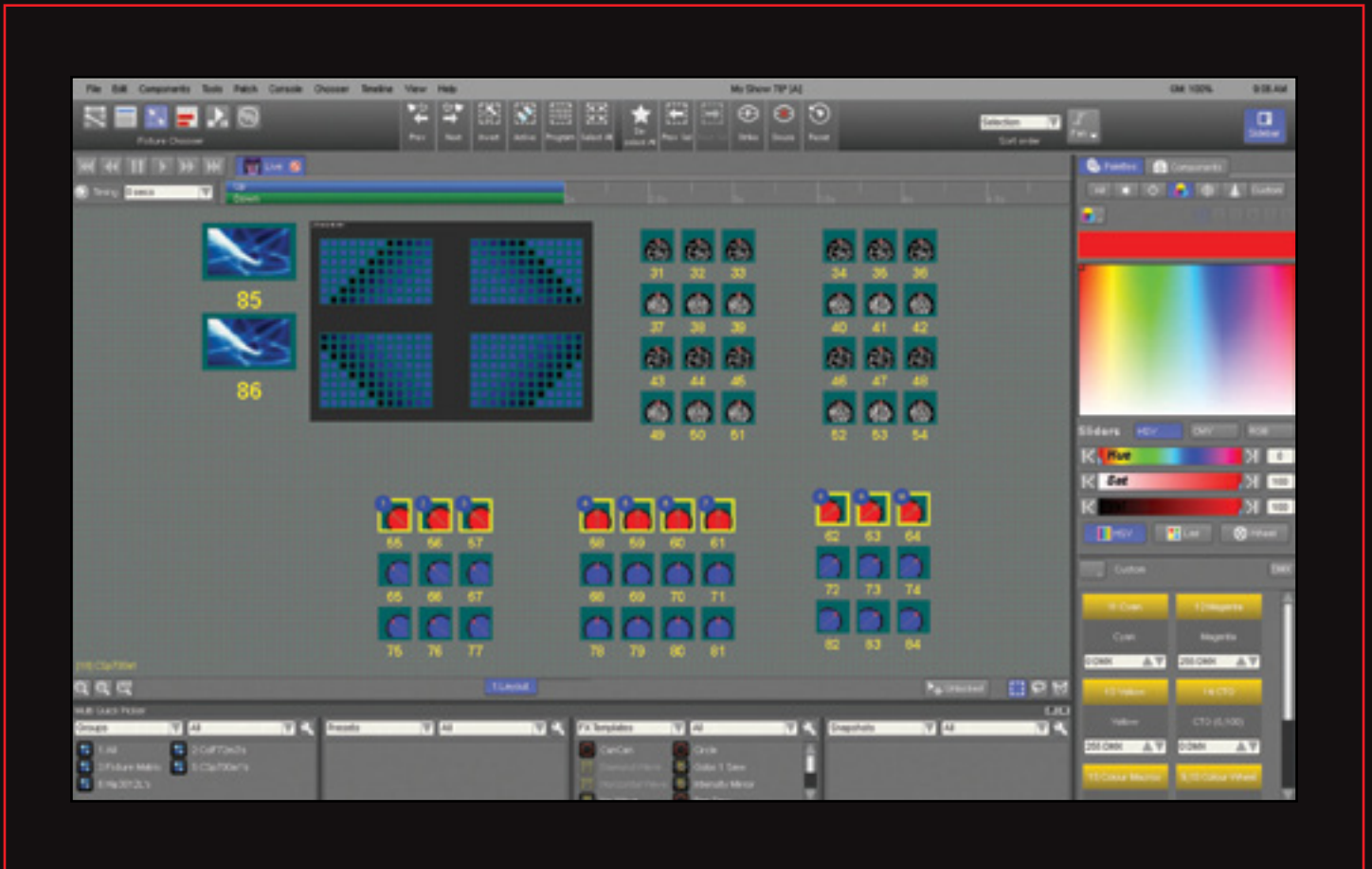
worked - that is the beauty of them!"

Rob continues, "The Jands Eco system allowed me to control the show with the most respect to the timings of things. Vista allowed me to quickly dial in timings that were accurate to the musical notations, and get them right."

"I also really loved being able to think less of fixture numbers and ordering, and more about the overall show goal! Jands continues to innovate - the Vista system really is designed beautifully."



Interface



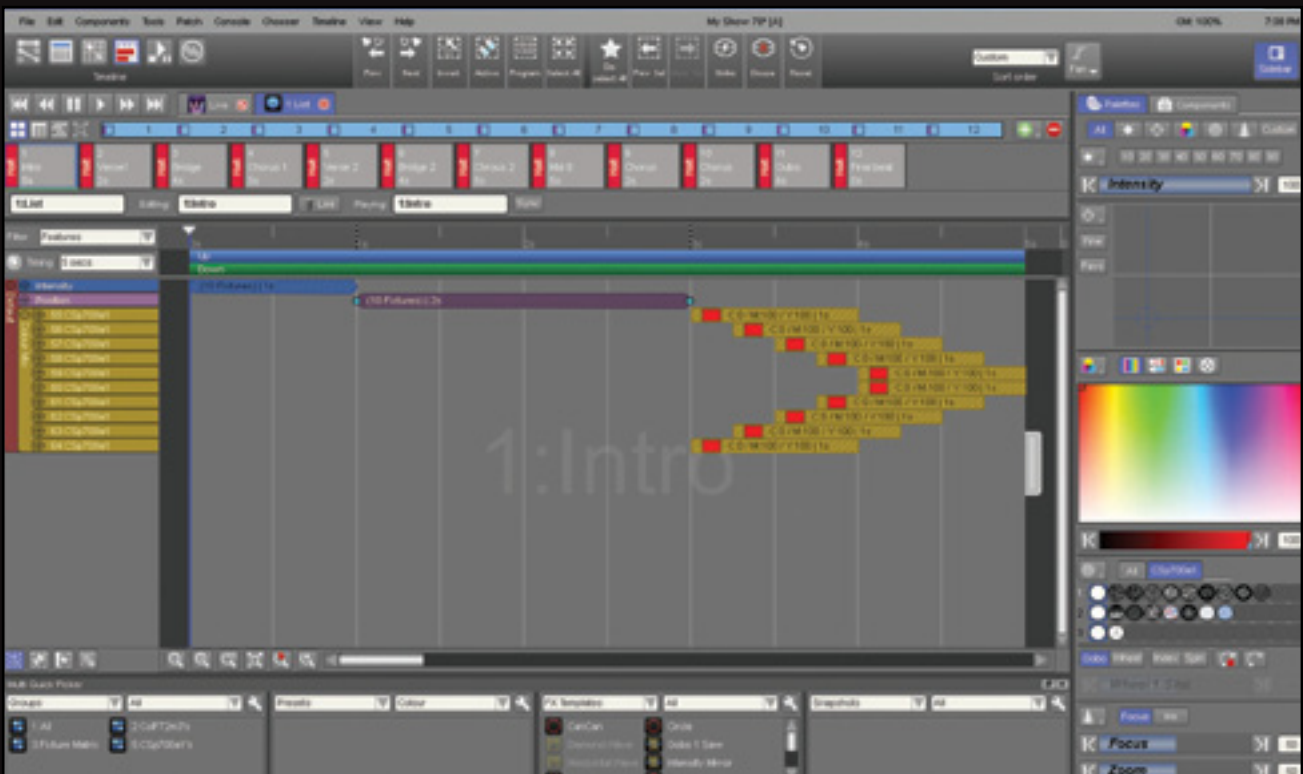
Vista's simple, flexible and incredibly intuitive interface gives the freedom to create visually, getting the most from today's mix of dimmers, moving lights, LEDs and media.

“Vista gives the tools to achieve straightforward tasks very easily, whilst retaining the ability to engage in complex programming. You don't have to do any maths to write a cue.”

Lighting Designer Rob Sinclair

“Vista v2 makes it so fast
It's so quick to create your cues, yet allows you the power

Timeline



Vista's innovative next generation timeline environment gives a complete and accurate picture of even complex changes to quickly get the detail right on the first attempt.

"It is such a beautiful and user-friendly console... For me it is one of the fastest consoles out there."

Lighting Designer Jeff Lava.

to get a show up and running.
to control the details." Lighting Designer Derek Jones

Gwinnett Church, USA



© Chris Green



© Chris Green

Georgia's Gwinnett Church has invested in four Jands Vista consoles to provide powerful yet simple-to-use control for different zones in its recently opened house of worship site.



© Jared Roman

Gwinnett prides itself on inviting volunteers to assist in running the site operation, including technical production aspects such as lighting for its worship services.

Lighting and Scenic Director at Gwinnett, Josh Mobley, oversaw the Church's investment in Jands' flagship Vista L5 console, as well as three smaller size Vista control consoles - an S3 and two M1s.

As well as being very popular with houses of worship on account of Vista's volunteer-friendly operation, all models in the hardware range run the same Vista software, making it effortless

for users to program, transfer and operate shows across different models being used at the same site.

Josh comments "After the volunteers watch the Jands training videos and spend some one-on-one time with me - hands-on with the various Vista desks - they catch on quickly!... I love the freedom of customisation that Jands has, which is one of the main reasons we specified the Vista consoles throughout the Church... Vista is suited to both structured cue lists and working on the fly in busking environments, and both styles are so easy to set up."

The Vista range includes a choice of portable, flexible control surfaces and self-contained consoles. Equally at home on tour or as a venue's house console, Jands' award-winning Vista lighting & media control system has been embraced by leading designers, companies and venues all over the world on a wide range of shows. Covering entertainment, education & drama, installations, corporate, events and worship, there's a Vista system to suit all levels of user and almost any scale of show.



Raymond Gubbay Christmas Spectacular at the Royal Albert Hall, UK

London's prestigious Royal Albert Hall used their Jands Vista console to provide thrilling lighting for "Christmas Spectacular" - the venue's first festive show co-produced by the Royal Albert Hall and renowned popular classic music promoter, Raymond Gubbay.



© Richard Rhys Thomas

© Alex Griffiths

One of the leading providers of concerts, opera and ballet to major venues across the country, Raymond Gubbay's popular Christmas Festival concerts have become part of a festive tradition.

"Christmas Spectacular" was the perfect event for keeping Christmas spirits high - with a stunning combination of favourite music classics, breathtaking dance, thrilling lights, sensational lasers and a fantastic indoor firework finale! Special guests included West End star Kerry Ellis and acclaimed chorister, Jack Topping.

Royal Albert Hall (RAH) Lighting Design and Systems Manager, Richard Rhys Thomas utilised the venue's Jands Vista console to control the ambitious lighting production.

"The vision for my design was to produce an exciting and dynamic light show in conjunction with lasers and pyrotechnic effects, to complement the music, dance, ballet, and vocal performances," says Richard. "The

music programme was quite varied, with music from well-known ballets, operas, musicals and the movies, and therefore the lighting reflected this with a combination of subtle and colourful looks to more bold and dramatic lighting effects."

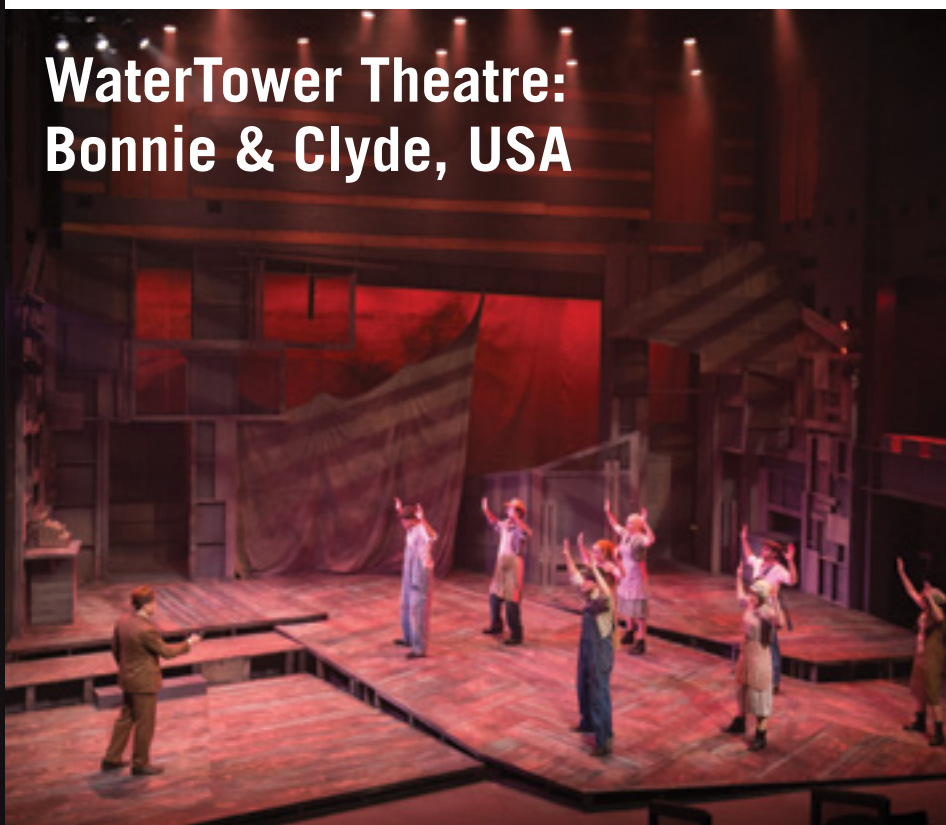
The design utilised the RAH lighting rig, with extras, and consisted of some 130 moving lights - including Clay Paky Alpha Washes & Spots, Vari-Lite VL 3000 & 2500 Spots, Robe Pointes and ETC Source 4 Revolutions.

"The Vista helps by making the job of creating looks with large numbers of fixtures very quick and easy," says Richard. "You are able to spend more time looking at the stage, focussing on the lighting and less time worrying about the programming, which for a show with a load in, a morning rehearsal and two performances in one day makes a real difference."

"I love the speed and power of the Vista console as a simple interface to create exciting shows with minimal effort."

Vista v2 was used to control the lighting and media for Texas-based WaterTower Theatre's spectacular production of "Bonnie and Clyde".

WaterTower Theatre: Bonnie & Clyde, USA



Founded in 1996, the multi award-winning WaterTower Theatre is a not-for-profit professional theatre company in Addison, Texas. It produces six main stage shows each season in its flexible, state-of-the-art facility, which is part of the Addison Theatre Centre.

The Centre already owned two Jands Vista consoles - the ultra-compact M1, and the original Vista T2, but recently added the range's flagship L5 console to their inventory.

Dan Schoedel of FullStageProductions.com, who was the Lighting Designer for "Bonnie and Clyde", comments:

"We actually upgraded from our existing Jands Vista T2 to the L5 during the show run. This is one thing that I love about the Vista line - the fact that the software is the same across the entire hardware range, making the transition from console to console totally seamless."

"I rarely let the board ops program on the Vista system since it's so much fun to design with!" Dan continues. "I find the ease of programming saves me time and effort, and as a result, it lets me refine my design. The Timeline Editor lets me quickly add depth to transitions and cues that I wouldn't spend the time doing on other consoles. The Vista also

helped me manage the variety of movers / colour changing fixtures with ease."

One of the major successes of this production was the inspired projections and visuals. An ArKaos media server was used to playback the multimedia elements and was easily controlled via Vista. Scott Guenther, Media Designer, comments "Running the media from the lighting console allowed for great control of the images and great flexibility in connecting the media and lighting together... In fact, the integration with Vista was our favourite feature."

Dierks Bentley's RISER Tour, USA



Lighting Designer, Chris Reade is back on the road with his Jands Vista T2, S1 and M1 consoles, controlling an even more technically ambitious rig for the latest tour - "RISER" - by Platinum-selling singer-songwriter, Dierks Bentley.



After recently topping the US Billboard country airplay chart with his 12th No.1 single, the country artist's latest tour is called "RISER", after the recent album of the same name. It kicked off in May in Charlotte, North Carolina, with sold-out shows in amphitheatres and arenas across the United States and Canada.

The tour further builds upon Chris's impressive lighting design and rig for Dierks Bentley on last year's "Locked & ReLoaded Tour" with Miranda Lambert - also controlled using Vista v2.

"I can't say enough positive things about Jands Vista!" says Chris, who first used the Vista platform in 2008, and subsequently invested in his own T2, S1 and M1. "I know Vista will handle whatever I throw at it. We did a massive show at one venue where we had 23 universes of instruments running, with only our tour floor package. The entire lighting rig (besides our floor package) had to be swapped over and the console

handled it all."

Chris continues: "Dierks is really into the visual aspect of his performances, and the Vista platform, in my opinion, puts me in the best situation to succeed in making his shows detailed in a shorter amount of programming time."

Chris is using his S1 / M1 as a tracking backup on the tour, in addition to his main T2 desk.

"It all works wonderfully, and it's extremely fast," says Chris. "I also love the speed of editing very detailed timing via the timeline... When I'm programming I can bang out my cue lists and then go back and get into the finer details per cue, per instrument, per parameter, to adjust all my timing, etc."

In addition to the larger venues, the tour also plays a selection of fairs,

festivals and casinos, meaning that Chris has to reconfigure the lighting rig based on venue capabilities.

"Without the fixture swap / cloning features of Vista I would not be able to get through a touring cycle without having to start from scratch on the non-tour dates."



Vista Training

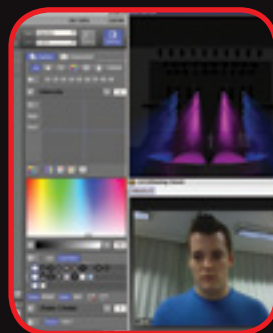
- Online, Virtual & Face-to-Face

There are a wide range of training options available to help get the most from the Vista v2 software. Each provides the knowledge to use all of the Vista hardware line-up. Options range from self-paced, self-learning videos right up to a full day of one-on-one training tailored to your specific needs. For details, dates and locations, or to book a place now, please contact vistatraining@ac-et.com.



Online Training Videos

Learn in your own time and at your own pace for ultimate flexibility. Visit <http://jands.com/support/training>



Virtual Training

Interactive, virtual training for individuals or groups.



Group Training

A limited number of free places are available at a range of UK locations. Courses include introductory to advanced level users.

Individual Training

A one-on-one session completely tailored around you.

For more information and to download the **free** version of the v2 software, visit:

www.jands.com/vista

Follow us on:



www.facebook.com/jandslighting



www.twitter.com/jandslighting

Or contact your local Jands dealer to arrange a demonstration



Worldwide Vista Dealer Network

To find your local Jands dealer, please visit:

www.jands.com/distribution



Worldwide Technical Support

No matter where you are in the world, or in what time zone, Jands and their worldwide dealer network are on hand to provide you with 24 hour technical support.

All details in the Vista application stories was correct at the time of the original press releases' publication. Product information is correct at the time of printing on 11/03/16. However, as we are constantly refining our product range, we reserve the right to change the specification without notice. E&OE. The rights and ownership of all trademarks are recognised.



STAGECL

Made for LEDs



AV Services



Event Rental



Clubs, Pubs & Bars



Retail



Education & Worship



WINNER
- Best Overall
Lighting Product

WINNER
- Best Conventional
Lighting Console



Winner - Lighting

It's simple really: if you use LED fixtures, the Multi Award-Winning Stage CL is the console for you.

If you're running a small lighting rig in a venue, as a rental, or in a retail space, you've probably upgraded to LED lights. Why? Because modern LEDs can produce any colour without the need for filters, so you can produce fantastic combinations of colours with just a few lights.

Sounds great, but you've probably noticed that when it comes to choosing a control console most of the ones available either aren't designed to control colour and intensity or are way more complicated (and expensive) than required.

This is why Jands have created the multi award-winning *Stage CL*.



www.jands.com/stage-cl

Phone +44 (0)1494 446000



facebook.com/jandslighting



twitter.com/jandslighting