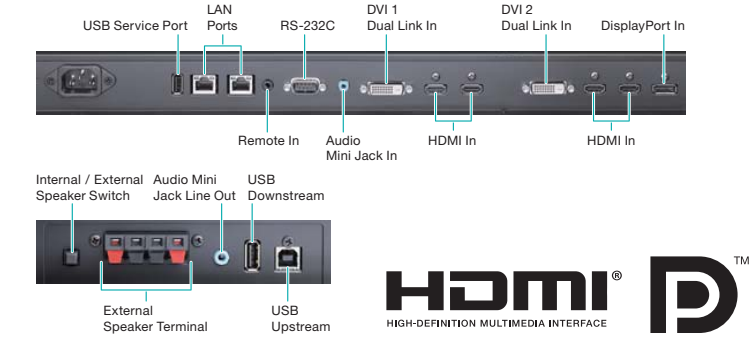


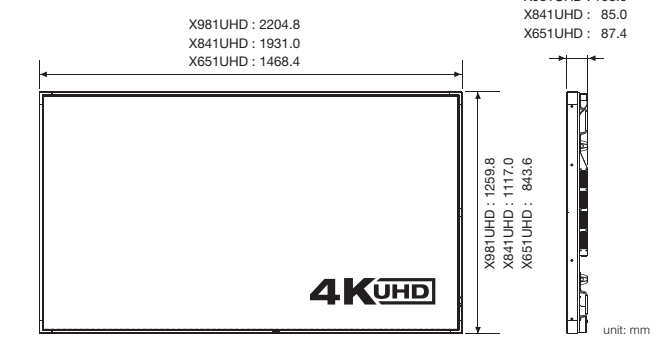
Specifications

MODEL	X981UHD	X841UHD	X651UHD
LCD MODULE			
Viewable Size (Diagonal)	98"	84"	64.5"
Active Screen Area (W x H)	2,158.8 x 1,214.4 mm	1,860.5 x 1,046.5 mm	1,428.5 x 803.5 mm
Panel Technology	IPS		
Native Resolution	3,840 x 2,160 at 60 Hz		
Brightness (Typical / Maximum)	380 / 500 cd/m²	380 / 500 cd/m²	320 / 450 cd/m²
Contrast Ratio (Typical)	1,300:1	1,400:1	1,300:1
Viewing Angle [°]	178 horizontal / 178 vertical (at contrast ratio 10:1)		
Response Time (Typical)	8 ms (G to G)	12 ms (G to G)	8 ms (G to G)
CONNECTIVITY			
Input Terminals	DisplayPort	DisplayPort x 1	
	HDMI	HDMI x 4	
	DVI	DVI-D Dual Link x 2	
	Audio	Digital:HDMI x 4, DisplayPort x 1, Analogue:3.5 mm Stereo Mini Jack x 1	
Output Terminals	Audio	3.5 mm Stereo Mini Jack x 1	
	External Speakers	Speaker terminals for L / R x 1	
External Control	RS232C in	Mini D-Sub 9 pin x 1	
	Ethernet	RJ-45 10 / 100BASE-T x 1	
	Remote in	3.5 mm Stereo Mini Jack x 1	
USB Hub	Upstream	USB 2.0 Type B (Max. 0.5 A) x 1	
	Downstream	USB 2.0 Type A (Max. 0.5 A) x 1	
OPS Option Slot	Slot Technology	Open pluggable specification (NEC / Intel OPS standard) x 1	
Speaker Output	External Speakers	15 W + 15 W (8 Ω)	
	Internal Speakers	10 W + 10 W	
POWER			
Power Requirement	7.7 to 3.0 A @ 100 to 240 V	6.7 to 2.7 A @ 100 to 240 V	3.6 to 1.4 A @ 100 to 240 V
Power Consumption (Typical)	420 W	380 W	150 W
Power Consumption - standby Mode	<0.5 W		
PHYSICAL SPECIFICATIONS			
Bezel Width	19.9 mm	32.6 mm	17.5 mm
Dimensions (without stand; WxHxD)	2,204.8 x 1,259.8 x 108.0 mm	1,931.0 x 1,117.0 x 85.0 mm	1,468.4 x 843.6 x 87.4 mm
Dimensions (with stand; WxHxD)	2,204.8 x 1,297.4 x 606.0 mm	1,931.0 x 1,154.2 x 606.0 mm	1,468.4 x 879.1 x 512.0 mm
Packaging Dimensions (WxHxD)	2,355 x 1,454 x 400 mm	2,157 x 1,290 x 360 mm	1,736 x 1,054 x 320 mm
Net Weight (without stand)	90.6 kg	70.5 kg	42.0 kg
Gross Weight (with box)	117.0 kg	90.5 kg	55.6 kg
VESA Hole Confi	400 x 400 mm (M8, 4 holes)	400 x 400 mm (M8, 4 holes)	400 x 400 mm (M8, 4 holes)
Supported Orientation	Landscape, Portrait		
ENVIRONMENTAL CONDITIONS			
Operating Temperature	0 to 40°C		
Operating Humidity	20 to 80 % (without condensation)		
ADDITIONAL FEATURES			
Operating Hours	24/7		
Sensors	Ambient Light Sensor	Integrated, triggered actions programmable	
	Motion Sensor	Optional, external, 4-5 m range, triggered actions programmable	
	Temperature Sensor	Integrated, 3 sensors, triggered actions programmable	
	NFC Sensor	Integrated, 2-cm range, free NEC Android App required	
ACCESSORIES			
Included	CD-ROM (User Guides / Manuals), DisplayPort Cable, Mini DisplayPort to DisplayPort cable, Power cord, Wireless remote control with batteries, Thumbscrews for optional stand, Clamps, Screw with washer		
Optional	Please see the below chart		

Terminals



Dimensions



Options

Model number	Slot Board							Stand	Speaker	Sensor Kit
	OPS-Single Board Controller (Computer)				SDI Board		HDBaseT			Motion, Ambient light IR Remote
	Core i5 60GB-SSD	Core i5 320GB-HDD	Core i5-520E	Celeron P4505	3G-SDI	HD-SDI				
X981UHD	N8000-8866	N8000-8865	N8000-8830	N8000-8822	SB-04HC	SB-01HC	SB-07BC	ST-801	SP-RM1 SP-TF1	KT-RC2
X841UHD								ST-651		
X651UHD										

For local options, please contact your supplier.

MultiSync, NaViSet, SpectraView and MultiProfiler are trademarks or registered trademarks of NEC Display Solutions, Ltd. in Japan, the United States and other countries. Microsoft is a registered trademark or trademark of Microsoft Corporation in the United States and/or other countries. The terms HDMI and HDMI High-Definition Multimedia Interface, and the HDMI Logo are trademarks or registered trademarks of HDMI Licensing LLC in the United States and other countries. DisplayPort and DisplayPort Compliance Logo are trademarks owned by the Video Electronics Standards Association in the United States and other countries. HDBaseT™ and the HDBaseT Alliance logo are trademarks of the HDBaseT Alliance. CRESTRON and CRESTRON ROOMVIEW are trademarks or registered trademarks of Crestron Electronics, Inc. AMX is a trademark or registered trademark of AMX in the United States and other countries. Trademark PjLink is a trademark applied for trademark rights in Japan, the United States of America and other countries and areas. VESA is a trademark of a nonprofit organization, Video Electronics Standard Association. Ethernet is either a registered trademark or trademark of Fujii Xerox Co., Ltd. All other trademarks are the property of their respective owners. The images in this brochure are samples. April 2015

Large-Screen LCD

NEC LCD Professional Large Format Displays

*MultiSync®* X981UHD / X841UHD / X651UHD



NEC is ushering in a new era of visual experience with **Ultra High Definition (UHD).**



# Loaded with innovative features and high end components, this series delivers a complete package for all kinds of demanding professional applications.

These displays are ideal for any heavy duty application: from control rooms to CAD/CAM, from medical review to professional conferencing, and from creative multimedia design to life size digital signage.

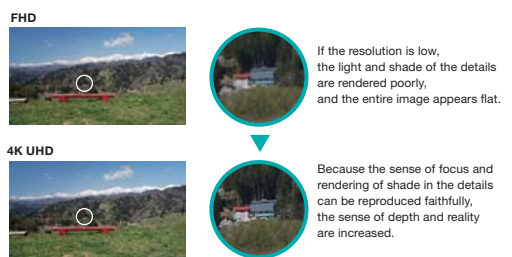
## Highlights

### 4K quality and large screens offer overwhelming appeal

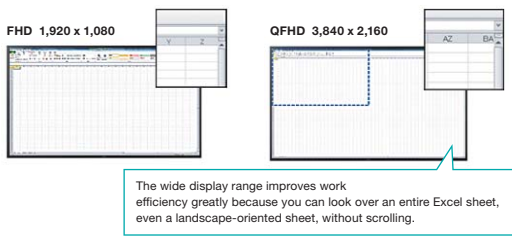
The impressive large screens offer 4K (3,840 x 2,160) display, which is four times the resolution of Full HD. They precisely reproduce photos and video down to their fine details and bring overwhelming presence, realism, and depth to public spaces.



#### Display differences with Full HD (FHD)

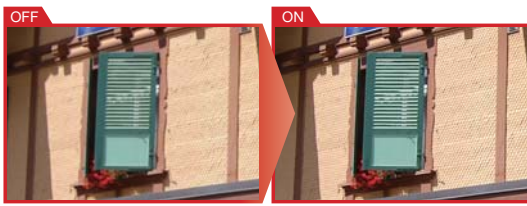


#### Visibility differences by screen size (display range in Excel)



### UHD upscaling function

The UHD upscaling function can display Full HD video signals at a quality-level equivalent to 4K, so many conventional content types can be displayed at high quality.

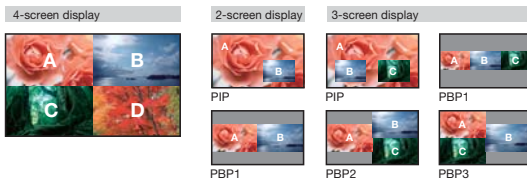


Increasing the resolution clarifies the unevenness of the wall, revealing a feeling of solidity and depth.

### Multi-screen display of up to four screens enables display of large volumes of information

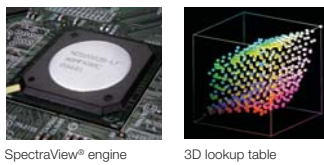
The multi-screen function lets you divide the display and show separate input signals at the same time. Even when the display is divided into two, three, or four screens, there are various multi-screen functions using 4K ultra high resolution. In addition, the display provides a seamless 4K multi-screen environment by displaying four Full HD (1,920 x 1,080) screens at the same time.

#### Examples of multi-screen display



### SpectraView® engine precisely recreates colours with high precision

The display can reproduce colours more accurately because it is equipped with a 3D lookup table and unique colour conversion algorithm through its dedicated imageprocessing IC. Various colour gamuts can be expressed precisely according to sRGB and other industry standards without calibration of each image-quality setting. In addition, display settings designed for different applications are preset at the factory as "Picture Mode" settings, so you can use a setting quickly by selecting it from the menu.

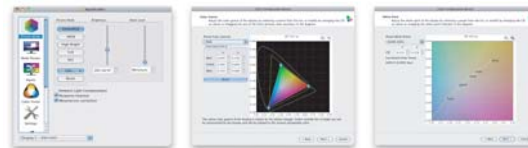


### Support for MultiProfiler® software to easily realize various emulation functions

The display supports MultiProfiler®, NEC's unique application software. Applying an ICC profile\* to the display easily enables advanced colour reproduction, and you can also create and save ICC profiles for displays that require colour management.



\*ICC profile: A file established by the International Color Consortium (ICC) that lists the colour gamut of the device to determine how a specific device reproduces colour. Files can be created for three main device types: displays, input devices (digital cameras, scanners, etc.) and output devices (printers, etc.).



### ICC profile emulation function

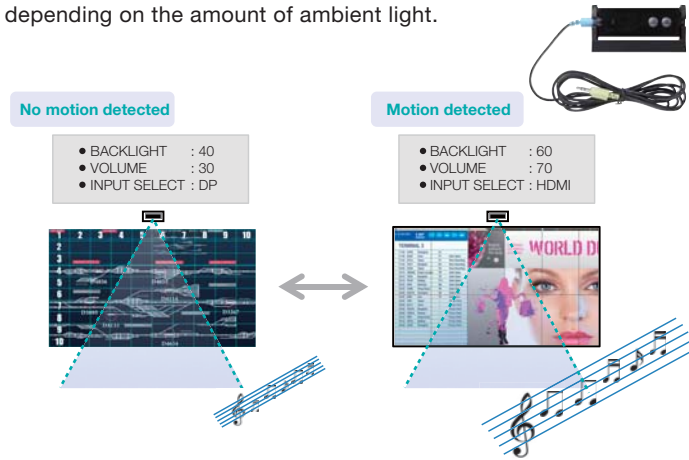
Using the newly developed MultiProfiler® application to apply various ICC profiles to the display has enabled highly accurate colour reproduction, even without software that supports colour management. By using simple operations, you can configure colour gamut such as sRGB and Adobe®RGB, and colour matching for displays of other companies is also supported.

### Print emulation function

Using MultiProfiler® to apply ICC profiles to the display reproduces print images without needing software that supports colour management. For example, ICC profiles compliant with Japan Colour and other industry standards, ICC profiles configured and managed by individual print companies, and ICC profiles of printers generated by software that supports other colour management systems can be used.

### Optional motion sensor for various applications

This optional motion sensor accessory (KT-RC2) helps to deliver creative digital signage to end users by allowing for dynamic control of brightness, audio and source inputs while saving operating costs. Auto dimming adjusts the back light of the LCD automatically depending on the amount of ambient light.



### Dedicated Colour Calibration Software\*

Display Calibration is available using NEC dedicated calibration software and a commercially available colour sensor. This is to ensure colour and brightness uniformity of each panel over the duration of their deployment.

\* NEC Display Wall Calibrator

### NaViSet Administrator 2

This freely downloadable multi-display management software is an all-in-one remote support solution that runs from a central location and provides monitoring, asset management and control functionality of the majority of NEC display devices and Windows computers. It is ideal for multi-device installations over larger infrastructures.



## Other Useful Features and Functions

- Optional expansion slot
- Remote control ID
- Intelligent power management system
- Screen saver function
- Aspect ratio control
- Memo function
- Carbon footprint meter
- Image and on-screen display flip
- Zoom
- 6-axis colour adjustments and sRGB standard
- Advanced video settings (Noise reduction, adaptive contrast)
- Color temperature adjustment
- Programmable gamma setting (3 settings)
- DICOM SIM
- Plug and play (DDC / CI, DDC2B)
- HDCP (High-bandwidth Digital Content Protection)
- USB hub
- Crestron RoomView
- AMX Discovery HTTP server
- PJLink
- Self-diagnosis
- Proof of play
- Status log function firmware
- Update over LAN
- Control lock function
- Handles