

DIGIPOWER 77

HD
HIGH-DEFINITION



FUJINON HDTV Field Zoom Lens
XA77x9.5BESM

9.5 - 732mm 1 : 1.7

- Maximum 1465mm focal length
- Built in OS-TECH, our Optical Stabilized Technology
- Employing Newly developed HT-EBC coat
- Built in Virtual High Resolution Encoders
- New Design

FUJINON HDTV Field Zoom Lens

XA77×9.5BESM

Maximum 1465mm focal length*

Compared with our equivalent lens, focal length has extended approx 40mm* without sacrificing its weight and MOD.

This was done to accommodate the request from customers.

* With extender



Red border: XA77x/f'=732mm Blue border: XA76x/f'=710mm

Employing Newly Developed HT-EBC Coat

HT-EBC coating (High Transmittance Electron Beam coating) success to improve blue response. Thanks to the coating, it enables reduced noise when adjusting white balance and improves color reproducibility.

Built in Virtual Encoders

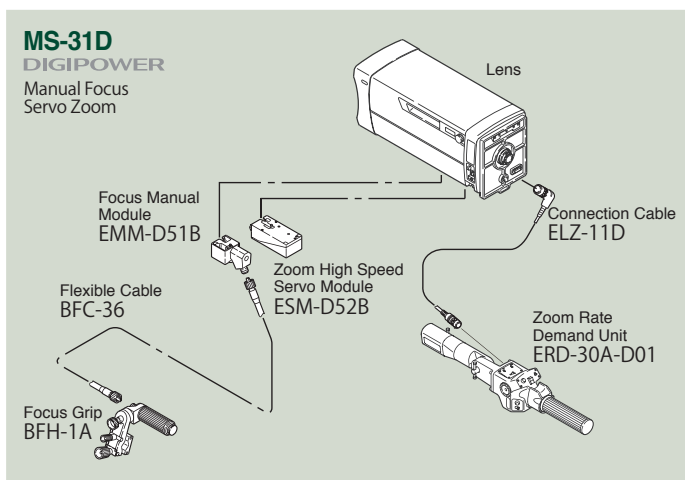
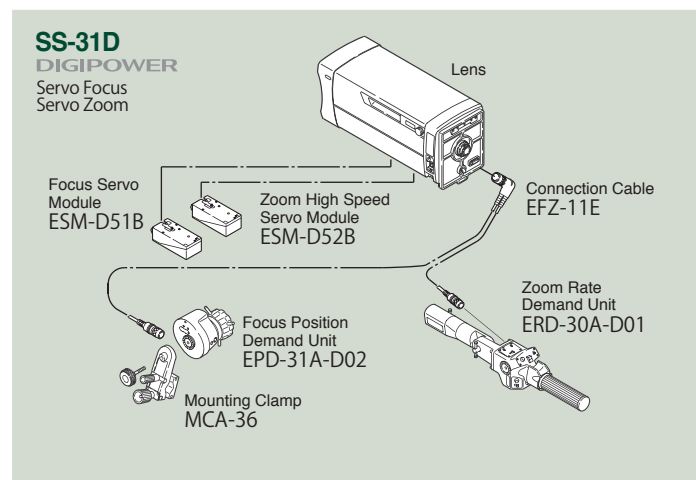
Employed is a built-in 16 bit encoder.

It allows extreme accuracy when using in virtual systems, very common in today's news shows, sports events, and so on. Built-in as standard, so there is no need to attach an external encoder control unit. You can experience high performance when using with virtual systems.



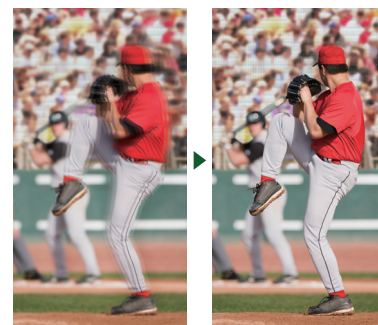
Virtual Encoder

Optional Control Kit



Built in OS-TECH, Optical Stabilized Technology

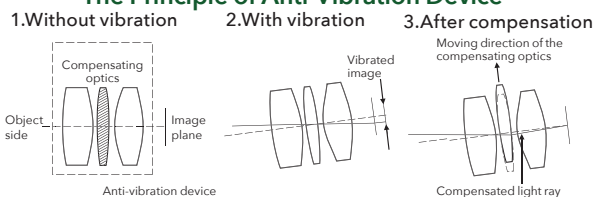
High efficiency improved optical stabilized technology is built in the XA77x. Fujifilm can offer customers stabilized clear images as standard, and additional special facilities.



Without Stabilizer

With Stabilizer

The Principle of Anti-Vibration Device



Model Name	XA77×9.5BESM	
Focal Length (1×) / (2×)	9.5–732mm / 19.0–1464mm	
Zoom Ratio	77 ×	
Extender	2 ×	
Maximum Relative Aperture (F-No.)	1 : 1.7 (9.5mm–335mm) / 1 : 3.8 (732mm)	
Minimum Object Distance (M.O.D.) from Front Lens	2.7m	
Object Dimensions at M.O.D. 16 : 9 Aspect Ratio	(1×)	(2×)
	9.5mm 2425 × 1363mm 732mm 32 × 18mm	19.0mm 1241 × 697mm 1464mm 16 × 9mm
Angular Field of View 16 : 9 Aspect Ratio	(1×)	(2×)
	9.5mm 53°34' × 31°41' 732mm 0°45' × 0°25'	18.6mm 28°20' × 16°09' 1464mm 0°23' × 0°13'
Approx. Size (H × W × L)	253 × 253 × 656.4mm	
Approx. Mass	22.4kg	

FUJIFILM
FUJIFILM Corporation

1-324 Uetake, Kita-ku, Saitama City, Saitama, 331-9624, Japan
http://www.fujifilm.com/products/optical_devices/tv_cine/

Due to a continuous process of product improvement, design and specification are subject to change without notice.



For Your Safety

Be certain to read the instruction for use before using any equipment.