



Chroma-Q®
BRILLIANT SOLUTIONS

Specification Sheet - Version: 1.6

Chroma-Q® Color Force™ 72

RGBA LED Fixture

Part No: CHCF72NFRGBA

DESCRIPTION

The fixture shall provide a very powerful 12,000 hot lumens output for washing areas up to 8m / 26ft high.
 The fixture shall be suitable for creating a wide range of cyclorama flood, border, wall wash, effects and feature lighting applications in the entertainment and architectural sectors.
 The fixture shall provide RGBA colour mixing.
 The fixture shall provide a high CRI of 92.
 The fixture shall provide a smooth, linear dimming curve.
 The fixture shall offer a choice of HSI, Fx HSI, RGB, RGBA, RGB (*Magic Amber™) and sRGBI (Magic Amber) control modes.
 The fixture shall feature a built-in stand-alone mode with real-time triggering.
 The fixture shall feature a built-in power supply.
 The fixture shall be manufactured from extruded material.

*Magic Amber is the term used for the unit's ability to bring in amber when mixing colours that require it.

FEATURES

- Create a wide range of cyclorama flood, border, wall wash, effects and feature lighting applications in the entertainment and architectural sectors.
- 12,000 hot lumens output easily washes 8m / 26 foot.
- Extremely smooth, uniform wash.
- RGBA colour mixing.
- Radically increased colour palette.
- High CRI of 92.
- Theatrical grade dimming.
- Rugged extruded aluminium body.
- Built-in power supply.
- Hidden fixing and cable management for seamless wall washing and fast deployment.
- Perfect for theatre, TV, concert touring, exhibitions and corporate events.
- Optional 'Cyc' and 'Border' lens media accessories available.

ORDERING INFORMATION

CHCF72NFRGBA: Chroma-Q Color Force 72 RGBA body finished in black
 CHCF72BDRRGB: Chroma-Q Color Force 72 c/w Border lens, RGBA body finished in black
 CHCF72CYCRGBA: Chroma-Q Color Force 72 c/w Cyc lens, RGBA body finished in black

ACCESSORIES

CHCFBL72: Chroma-Q Border lens for Color Force 72
 CHCFCL72: Chroma-Q Cyc lens for Color Force 72

OVERALL SPECIFICATIONS

Net Dimensions:	Width: 1,759mm / 69.25" Height: 182mm / 7.25" Depth: 177mm / 7"
Net Weight:	22kg / 48lb
Shipping Dimensions:	Width: 1,855mm / 73" Height: 305mm / 12" Depth: 320mm / 12.5"
Shipping Weight:	25kg / 56lb
Power Supply:	Built-in
Power Input Rating:	100-240V AC, 50-60 Hz, 700VA
Power Factor:	0.995
Power Consumption:	660W
Typical Power & Current:	Measurements done with all LEDs at max. intensity. Measurements made at nominal voltage. Allow for a deviation of +/- 10%.
Power Connector In/Out:	PowerCon
Data Connectors In/Out:	XLR 5-pin
Control Protocol:	ANSI E1.11 USITT DMX 512-A
Cooling System:	Forced - 2x fans
Operating Temperature:	0°C to 40°C
Construction:	Anodised aluminium extrusion
Colour:	Black
LED Engines:	12
LEDs per Engine:	24 (6 x RGBA)
Total LEDs:	288
Control Modes:	43 channels Fx HSI, 36 channels HSI, 36 channels RGB (Magic Amber), 48 channels RGBA, 49 channels sRGBI (Magic Amber), 9 channels Fx HSI, 3 channels HSI, 3 channels RGB, 4 channels RGBA, 5 channels sRGBI (Magic Amber), 1 channel DMX Look Select
Dimming Curve:	Theatrical
Variable Effects Engine:	Yes
Effects Parameters:	Grouping, colour speed, colour fan, colour range, colour step, intensity effects and intensity fan
Hot Lumen Output:	White 12,000 hot lumen (prelim)
CRI:	92
Optics:	Specialised close focus lens
Beam Angle:	23° (approx.)
Beam Angle with Optional Cyc Lens:	80 x 30° (approx.)
Beam Angle with Optional Border Lens:	60° (approx.)
Beam Distribution:	Asymmetrical direct illumination
CCT:	Adjustable 1,000 – 10,000K
Lamp Life:	L70 up to 50,000 hours
IP Rating:	IP20
Built-In Hardware:	Quick release lever for tilt adjustment
Approvals:	CISPR 22 :2006/EN55022 :2006 & CISPR 24 :1997/EN55024 :1998, ICES-003 :2004 & FCC Part 15 Subpart B: 2007, CSA C22. No. 166-M1983:R2008 UL 1573:2003; UL 8750



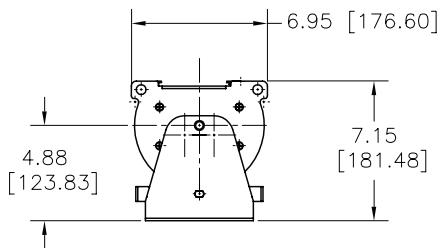
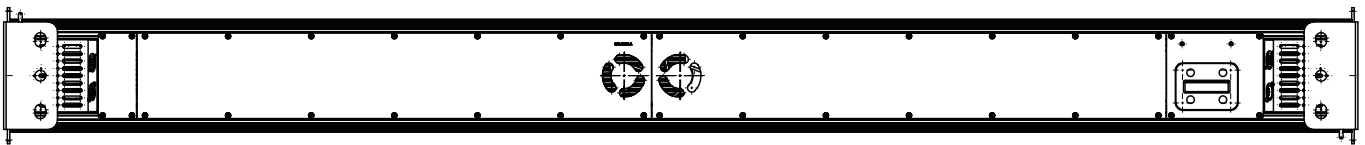
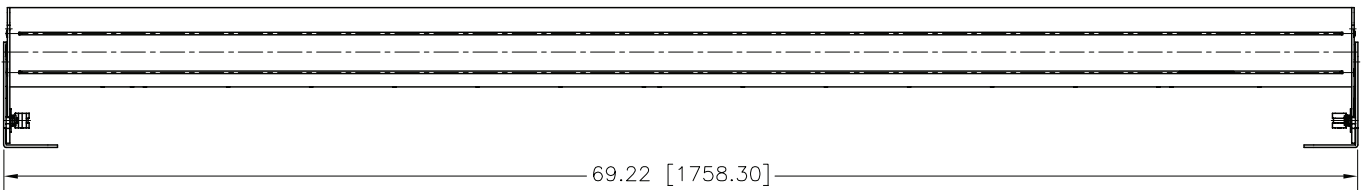
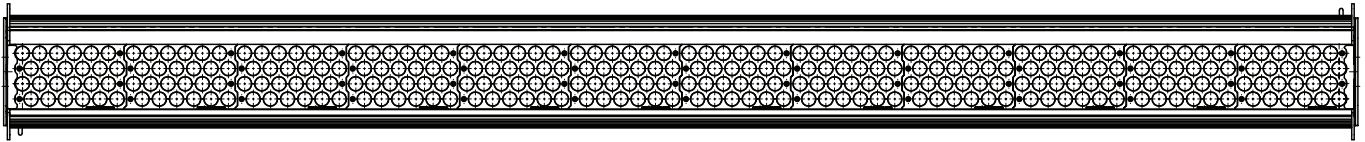
Chroma-Q[®]
BRILLIANT SOLUTIONS

Specification Sheet - Version: 1.6

Chroma-Q[®] Color Force™ 72

RGBA LED Fixture

Part No: CHCF72NFRGBA



Chroma-Q and all associated product names are recognised trademarks, for more information visit www.chroma-q.com/trademarks. The rights and ownership of all trademarks are recognised. Whilst every effort has been made to ensure that the information is correct, Chroma-Q accepts no liability for errors or omissions. Technical specifications and data are provided for guidance only. Because we constantly aim to improve our products, we reserve the right to amend or alter at any time and without prior notice, the specifications of any product. E&OE.