

4

3

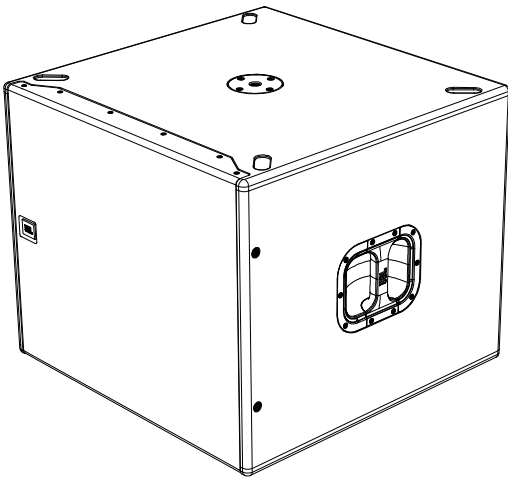
2

1

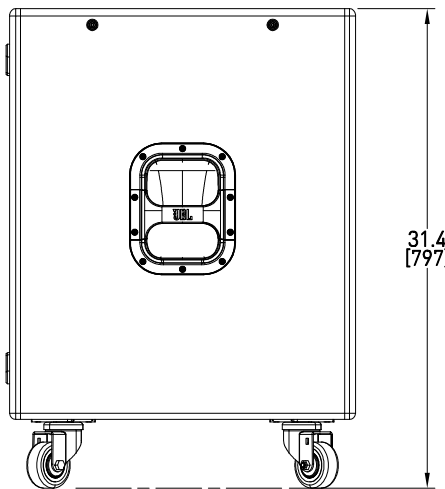
THESE DRAWINGS AND SPECIFICATIONS ARE THE PROPERTY OF JBL INCORPORATED. THEY ARE ISSUED IN STRICT CONFIDENCE AND SHALL NOT BE REPRODUCED OR USED AS THE BASIS FOR MANUFACTURE OR APPARATUS WITHOUT WRITTEN PERMISSION.

ALL MATERIAL SPECIFIED ON THIS DRAWING SHALL CONTINUALLY COMPLY WITH THE EFFECTIVE EU RoHS DIRECTIVE, CURRENTLY 2011/65/EU, INCLUDING ALL AMENDMENTS.

REVISIONS				
LTR	DESCRIPTION	DRFT	DATE	APPR
A	INITIAL RELEASE	LUIS	09/03/21	

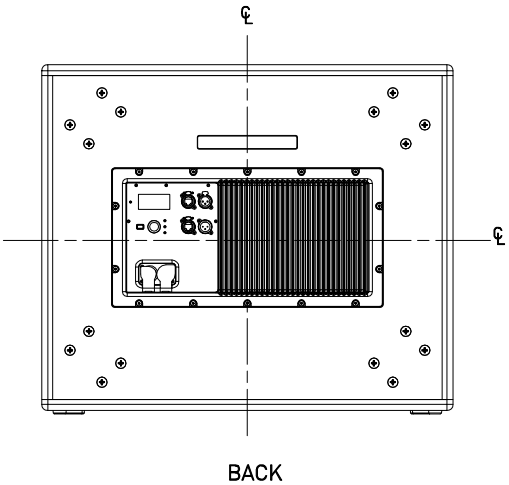
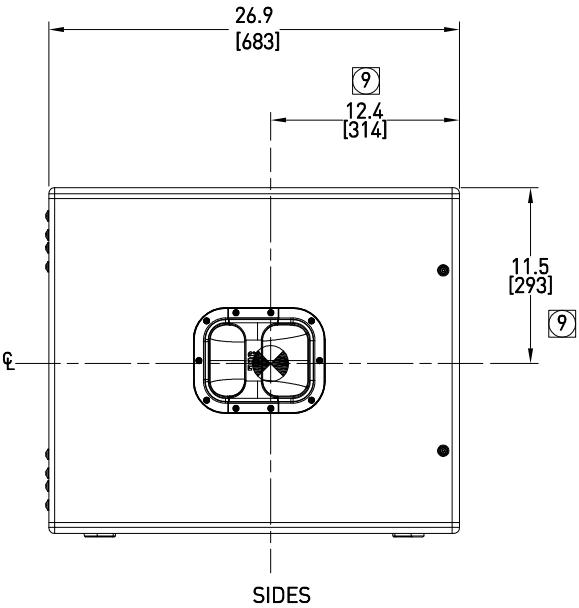
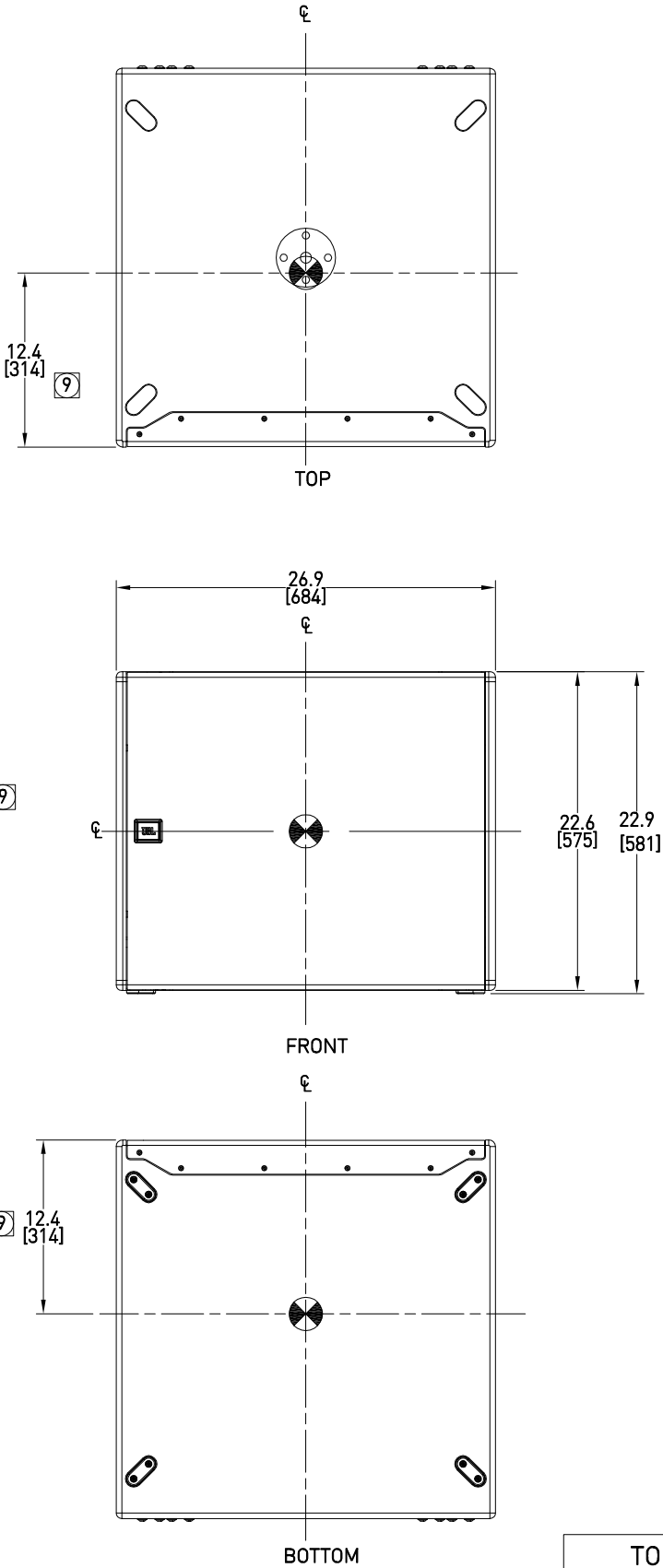


SCALE 1:1



VIEW SHOWN WITH CASTERS  
SCALE 1:1

<div>TOLERANCES</div> <div>(UNLESS OTHERWISE SPECIFIED)</div> <div>X.XX ± .063 INCH</div> <div>X.X ± .125 INCH</div> <div>ANGULAR TOLERANCE OF 0°±30'</div> <div>FRACTIONAL DIMENSIONS ± 1/32</div> <div><div><div>• DIMENSIONS ARE INCHES INCHES [MM]</div><div>• ALL DIMENSIONS ARE FINISHED DIMENSIONS</div><div>• DO NOT SCALE DRAWING</div></div></div>		<div>HARMAN</div> <div>JBL Professional</div> <div>8500 Balboa Blvd</div> <div>Northridge, CA 91329</div> <div>USA</div>	
<div>TITLE</div> <div>CUSTOMER DRAWING: SRX918S</div>			
<div>SIZE</div> <div>A</div>	<div>DRAWING NO.</div> <div>1000367311</div>	<div>REV</div> <div>A</div>	
<div>SCALE</div> <div>NTS</div>		<div>SHEET</div> <div>1</div>	<div>OF</div> <div>1</div>



9. INDICATED DIMENSIONS ARE TO (CG).
8. SYMBOL INDICATES CENTER OF GRAVITY (CG).
7. SUSPENSION TYPE: NIL.
6. COMPONENTS: LF - (1) 2279G-1.
5. GRILLE MATERIAL: 14GA (1.8MM) PERFORATED SPCC POWERCOATED BLACK AND CLOTH BACKING.
4. AUDIO INPUT CONNECTORS: (1) XLR NEUTRIK.  
AUDIO THROUGH OUT CONNECTORS: (1) XLR NEUTRIK.  
ETHERNET IN AND THROUGH OUT CONNECTORS: (2) ETHERCON NEUTRIK.  
POWER IN AND THROUGH OUT CONNECTORS: (1) POWERCON NEUTRIK.
3. WEIGHT: 44.5 KG (98 LBS).
2. FINISH: BLACK DURAFLEX.
1. CABINET MATERIAL: 18MM THICK PLYWOOD.

NOTES: (UNLESS OTHERWISE SPECIFIED)